

**Phospho-PLXND1(Y1642) Antibody**  
**Affinity Purified Rabbit Polyclonal Antibody (Pab)**  
**Catalog # AP3584a****Specification**

---

**Phospho-PLXND1(Y1642) Antibody - Product Information**

Application	DB,E
Primary Accession	<a href="#">Q9Y4D7</a>
Other Accession	<a href="#">Q3UH93</a>
Reactivity	Human
Predicted	Mouse
Host	Rabbit
Clonality	Polyclonal
Isotype	Rabbit IgG
Calculated MW	212007

**Phospho-PLXND1(Y1642) Antibody - Additional Information****Gene ID** 23129**Other Names**

Plexin-D1, PLXND1, KIAA0620

**Target/Specificity**

This PLXND1 Antibody is generated from rabbits immunized with a KLH conjugated synthetic phosphopeptide corresponding to amino acid residues surrounding Y1642 of human PLXND1.

**Dilution**

DB~~1:500

E~~Use at an assay dependent concentration.

**Format**

Purified polyclonal antibody supplied in PBS with 0.09% (W/V) sodium azide. This antibody is purified through a protein A column, followed by peptide affinity purification.

**Storage**

Maintain refrigerated at 2-8°C for up to 2 weeks. For long term storage store at -20°C in small aliquots to prevent freeze-thaw cycles.

**Precautions**

Phospho-PLXND1(Y1642) Antibody is for research use only and not for use in diagnostic or therapeutic procedures.

**Phospho-PLXND1(Y1642) Antibody - Protein Information****Name** PLXND1**Synonyms** KIAA0620

**Function** Cell surface receptor for SEMA4A and for class 3 semaphorins, such as SEMA3A, SEMA3C and SEMA3E. Plays an important role in cell-cell signaling, and in regulating the migration of a wide spectrum of cell types. Regulates the migration of thymocytes in the medulla. Regulates endothelial cell migration. Plays an important role in ensuring the specificity of synapse formation. Required for normal development of the heart and vasculature (By similarity). Mediates anti-angiogenic signaling in response to SEMA3E.

#### **Cellular Location**

Cell membrane {ECO:0000250|UniProtKB:Q3UH93}; Single-pass membrane protein {ECO:0000250|UniProtKB:Q3UH93}. Cell projection, lamellipodium membrane

#### **Tissue Location**

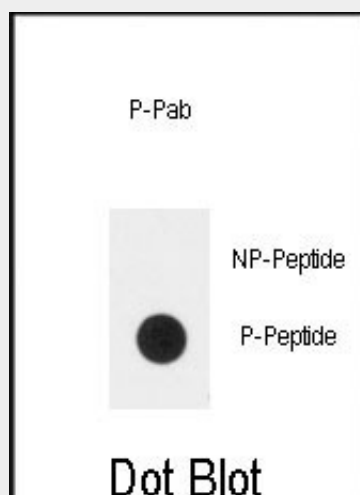
Detected at low levels in heart, placenta, lung, skeletal muscle, kidney, thymus and liver. Detected at very low levels in brain, colon, spleen, small intestine and peripheral blood leukocytes.

### **Phospho-PLXND1(Y1642) Antibody - Protocols**

Provided below are standard protocols that you may find useful for product applications.

- [Western Blot](#)
- [Blocking Peptides](#)
- [Dot Blot](#)
- [Immunohistochemistry](#)
- [Immunofluorescence](#)
- [Immunoprecipitation](#)
- [Flow Cytometry](#)
- [Cell Culture](#)

### **Phospho-PLXND1(Y1642) Antibody - Images**



Dot blot analysis of anti-Phospho-PLXND1-pY1642 Antibody (Cat.#AP3584a) on nitrocellulose membrane. 50ng of Phospho-peptide or Non Phospho-peptide per dot were adsorbed. Antibody working concentrations are 0.5ug per ml.

### **Phospho-PLXND1(Y1642) Antibody - Background**

This protein belongs to calcium-dependent cell adhesion molecule family.

### **Phospho-PLXND1(Y1642) Antibody - References**

van der Zwaag B.,Dev. Dyn. 225:336-343(2002).